



Metal Hose / Bellows / Pipe Assemblies /
Design and Stress Analysis

Company Introduction

- Arcflex commenced in 1980 specialising in the correct assembly of purpose built flexible hoses, bellows and pipe assemblies.
- Over the past 37 years our reputation has expanded the company into a well established and respected leader in our field.
- Our continuing success has provided steady growth and investment into a complete manufacturer.
- Extensive stocks of Corrugated Metal hose, Bellows and Fittings in all materials and sizes.



Quality Assured

- Arcflex hold and operate a quality management system which complies with the requirements of **BS EN ISO 9001:2008**
- Arcflex are approved by Zurich to **Design and manufacture** Pipe Assemblies, Bellows and Hoses under the **Pressure Equipment Directive (PED) (97/23/EC)** in all categories. Allowing us to fully CE mark our products where necessary.

The Pressure Equipment Directive (PED) (97/23/EC) is a legal requirement and places responsibility for safety on the manufacturer and is applicable to all pressure equipment put into service within the European Union.



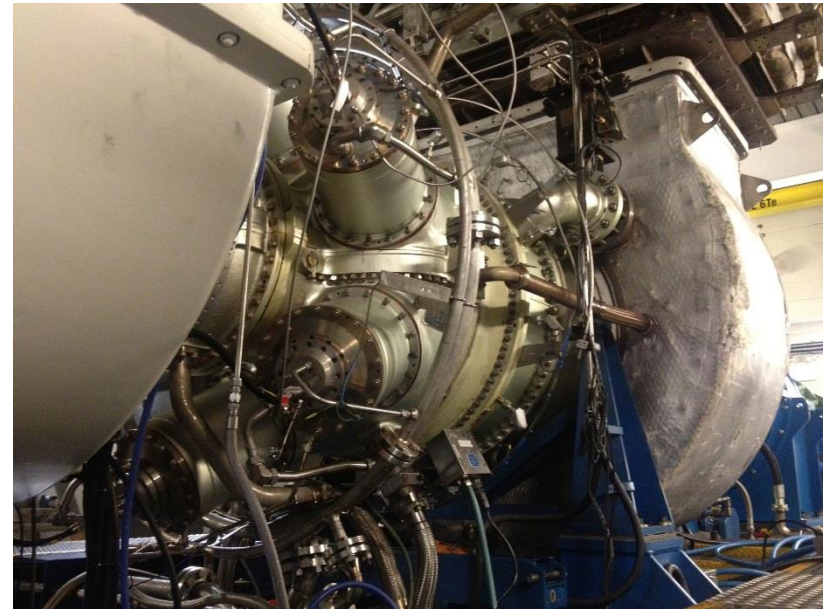
Quality



Industries Sectors

Pipes, Hoses and Bellows Solutions for all Industries including:

- Aerospace
- Mining
- Nuclear
- Petrochemical
- Power Generation
- Pharmaceutical
- Steel Mills
- Transport
- Water & Steam
- Automotive
- Brewing
- Chemical
- Construction
- Distribution
- Electronic
- Food & Beverages
- Materials Handling



Client Base



Satisfied customers include:

- Tata Steel Works (Contracted Supplier)
- Siemens (Contracted Supplier)
- Babcock Nuclear QL 1 Approved
- Safran Snecma/Cenco/Techspace Aero
- Red Bull Technology (F1)
- Alstom Trains/Power
- Rolls-Royce
- Meggitt Aerospace
- JCB

SIEMENS



ALSTOM



MEGGITT



ExxonMobil



Manufacturing Facilities



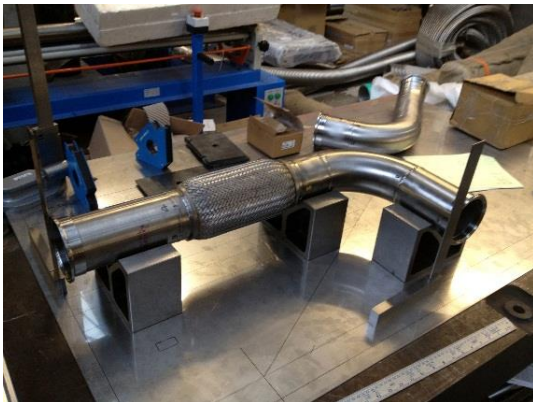
- Braiding machines - for manufacturing coiled loose or over braiding
- Tube Saws up to 12"
- CNC Turning CNC Milling
- Full sheet metal fabrication and rolling
- Ultrasonic cleaning and industrial drying
- Tube bending in house up to 3"
- Orbital welding equipment
- 10 Coded Tig and Mig welding bays EN and ASME
- Tube and Cuff expanding machines
- Swaging Machines up to 10"
- Pressure test facility
- Work shop presses
- Grinding and polishing
- Seam Welding and Resistance welding machines



Stainless Steel Bellows And Hoses



Pipe Fabrications/ Duct Assemblies

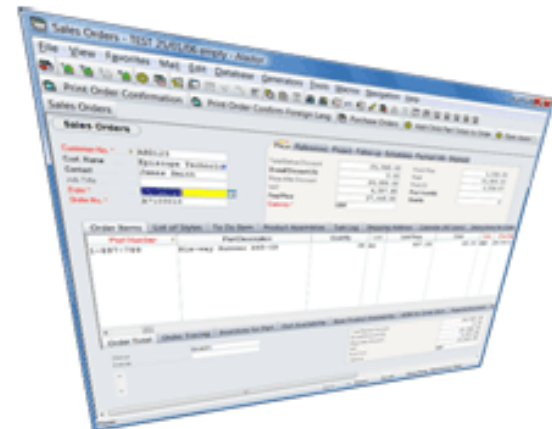


Business Improvements

Arcflex invested in the implementation of Shop Floor Data Capture 4 years ago.

Benefits to our customers will include;

- Improved lead times
- Sustaining our competitive pricing in a turbulent market
- Improved communication throughout the sales and production work flow right up to deliveries and invoicing
- Increased productivity
- Quality improvements and traceability.



SFDC Targets

- Real Time Manufacturing Information
- Manufacturing Route and process control
- Material and employee input controlled and all handled with business rules.



Work Order 12045738/1 Released

Customer Name	Part Number	Part Description	Cust. Part Number	Customer P.Order	Sales Order	Line No. S.O.	Despatch Date	QTY Remain
Tata Steel Uk Limited	A.022000.A	2" X 2135mm COAL INJECTION HOSE	W5400918	4510686739	ORD12045738	010	24/07/12	22

PED Cat. (2)
SEP

Part Specifications
Pressure Test Type 4
Air Under Water



Key Benefits Realised

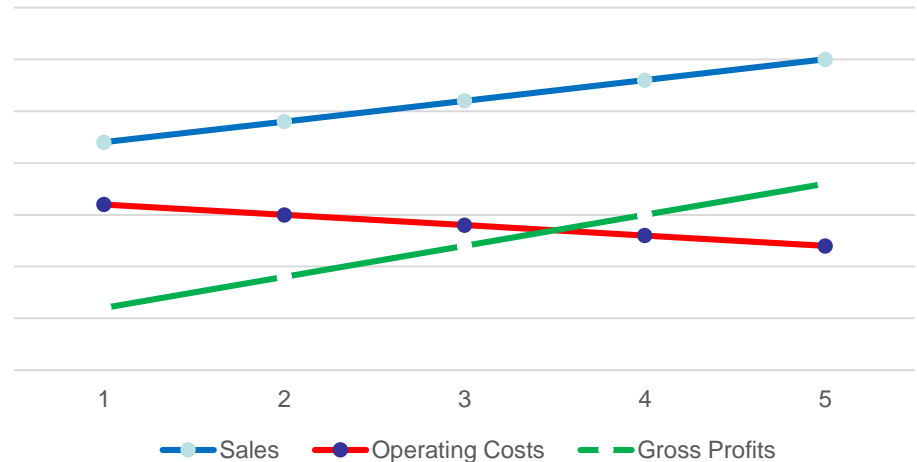
Sales Benefits

- Better Service
- Impressive Sales Tool
- Increased Sales

Cost Of Sales

- Improved Efficiency
- Reduced Auditing Costs
- Reduced Management Costs
- Reduced Stock Expenditure
- Reduced Costly Errors
- Decreased Cost of Sales

Impact on Business





Please visit our web page for more info on our products and services @

WWW.ARCFLEX.COM